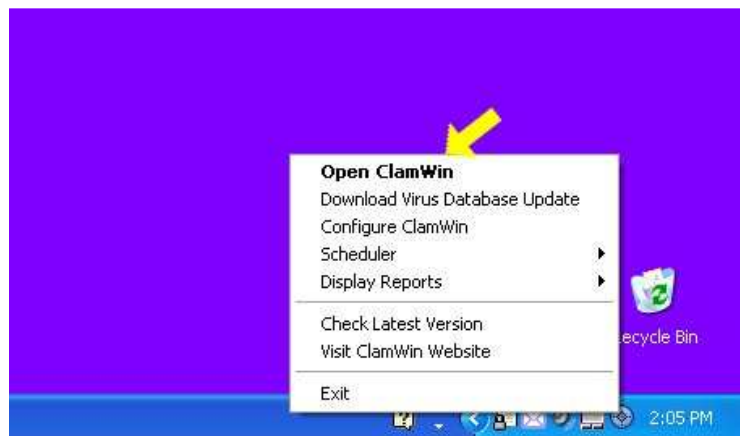
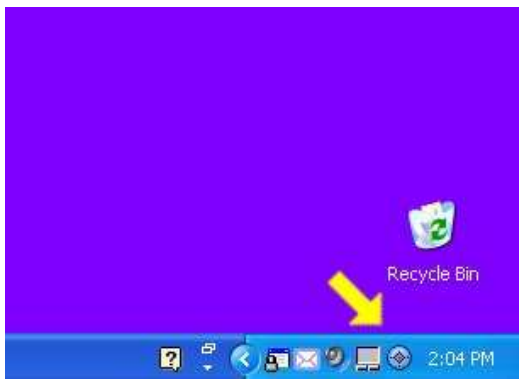
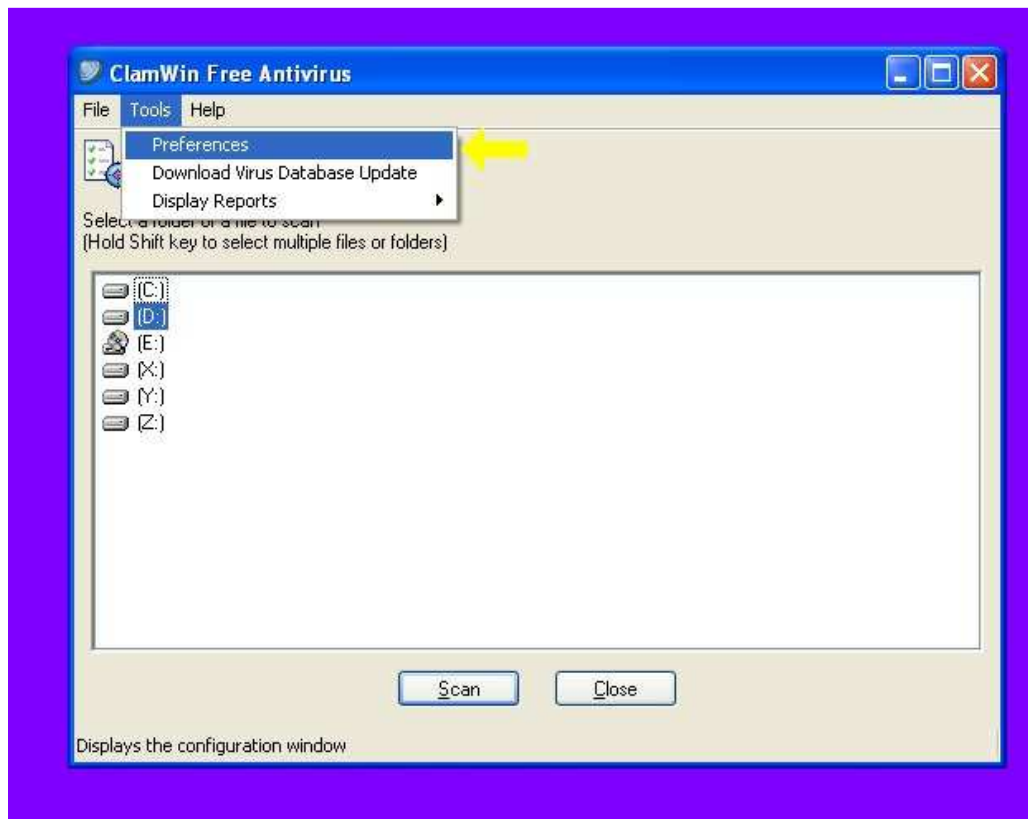


Instructions for configuring ClamWin for automatic, daily, anti-virus scans

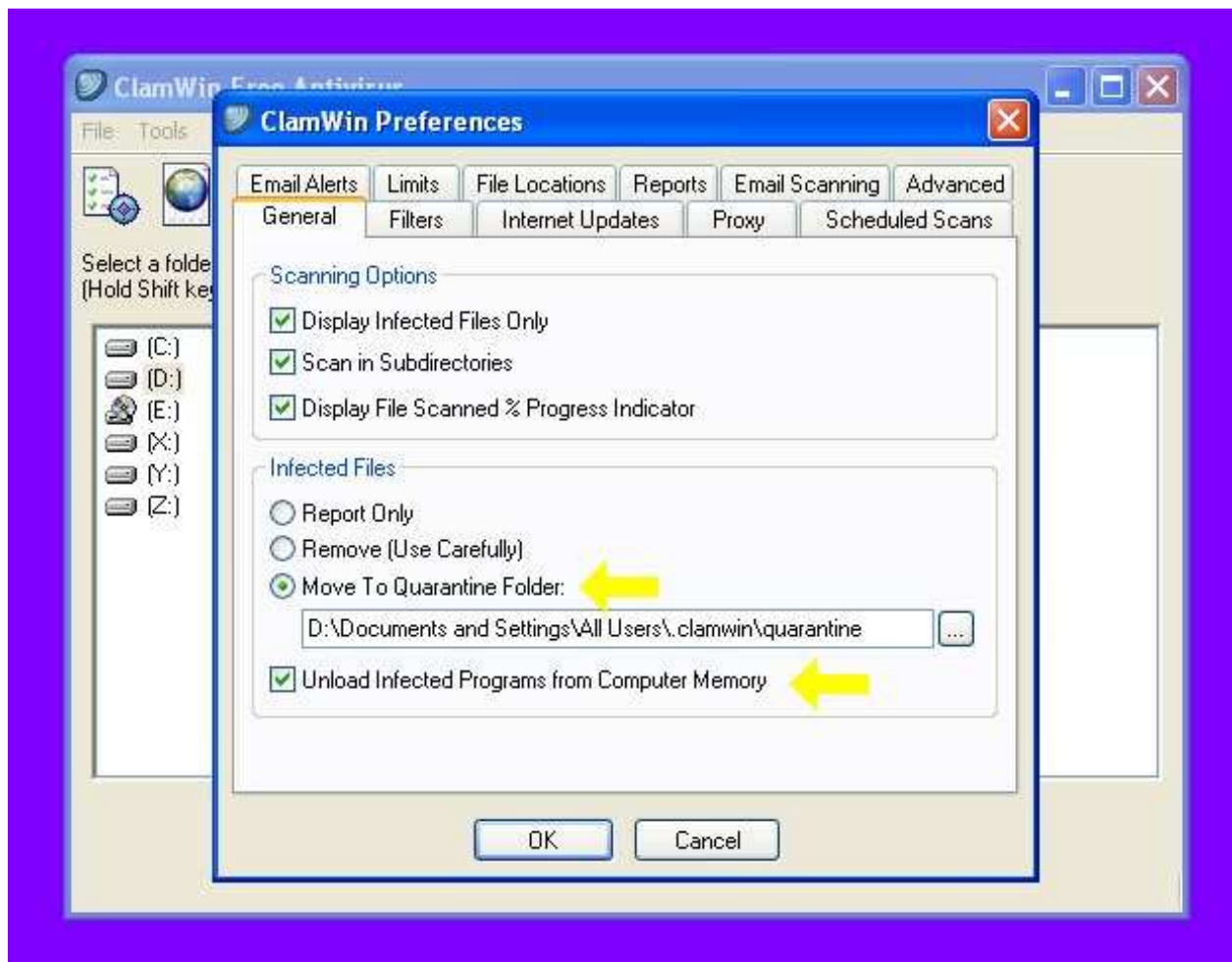
Open up the ClamWin control panel by right clicking on the ClamWin icon in the system tray, and then clicking on “Open ClamWin”. (If you don’t see the ClamWin icon, please tell Jay.)



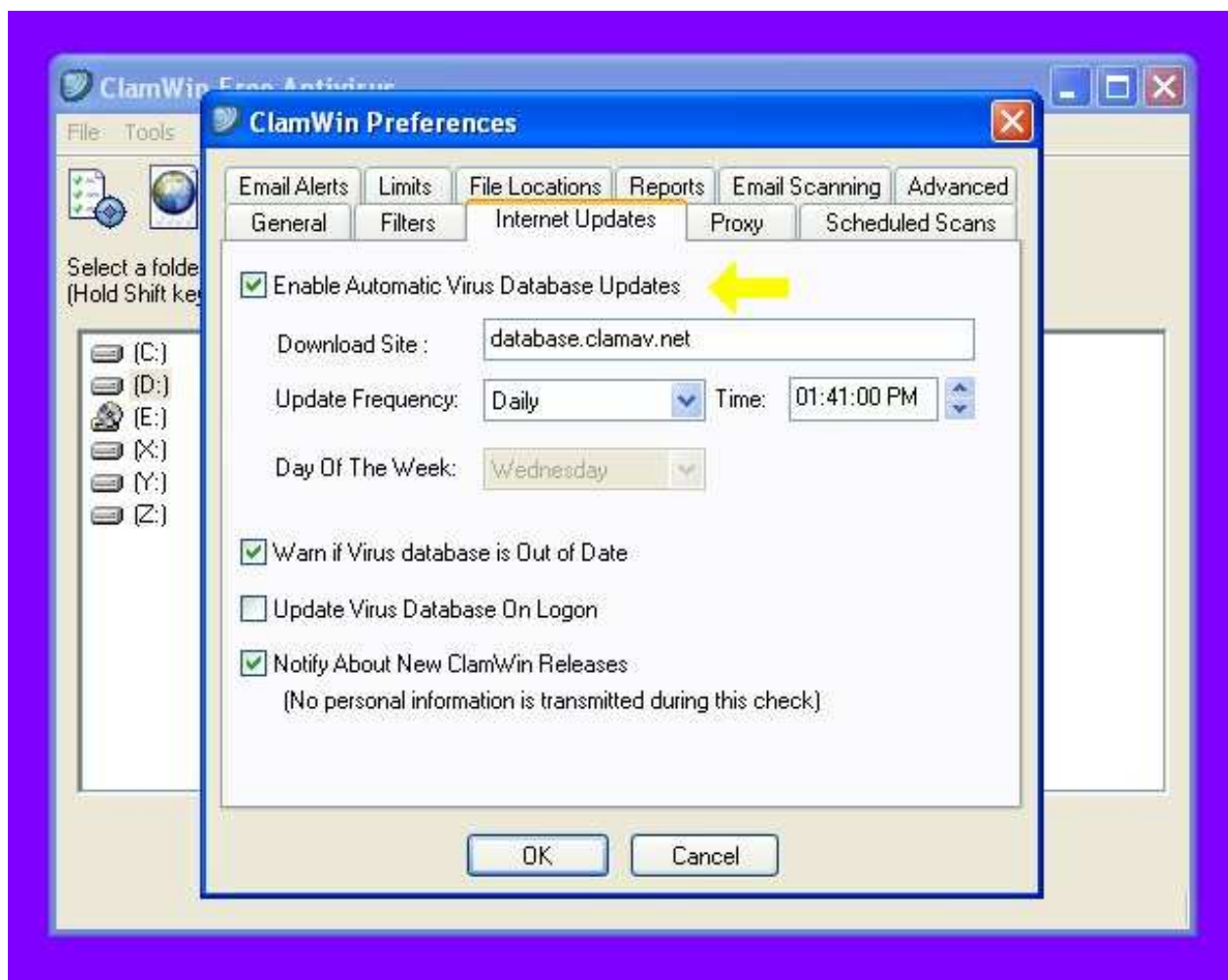
Next, you want to get to the preferences area of ClamWin. Click on Tools, and then on Preferences.



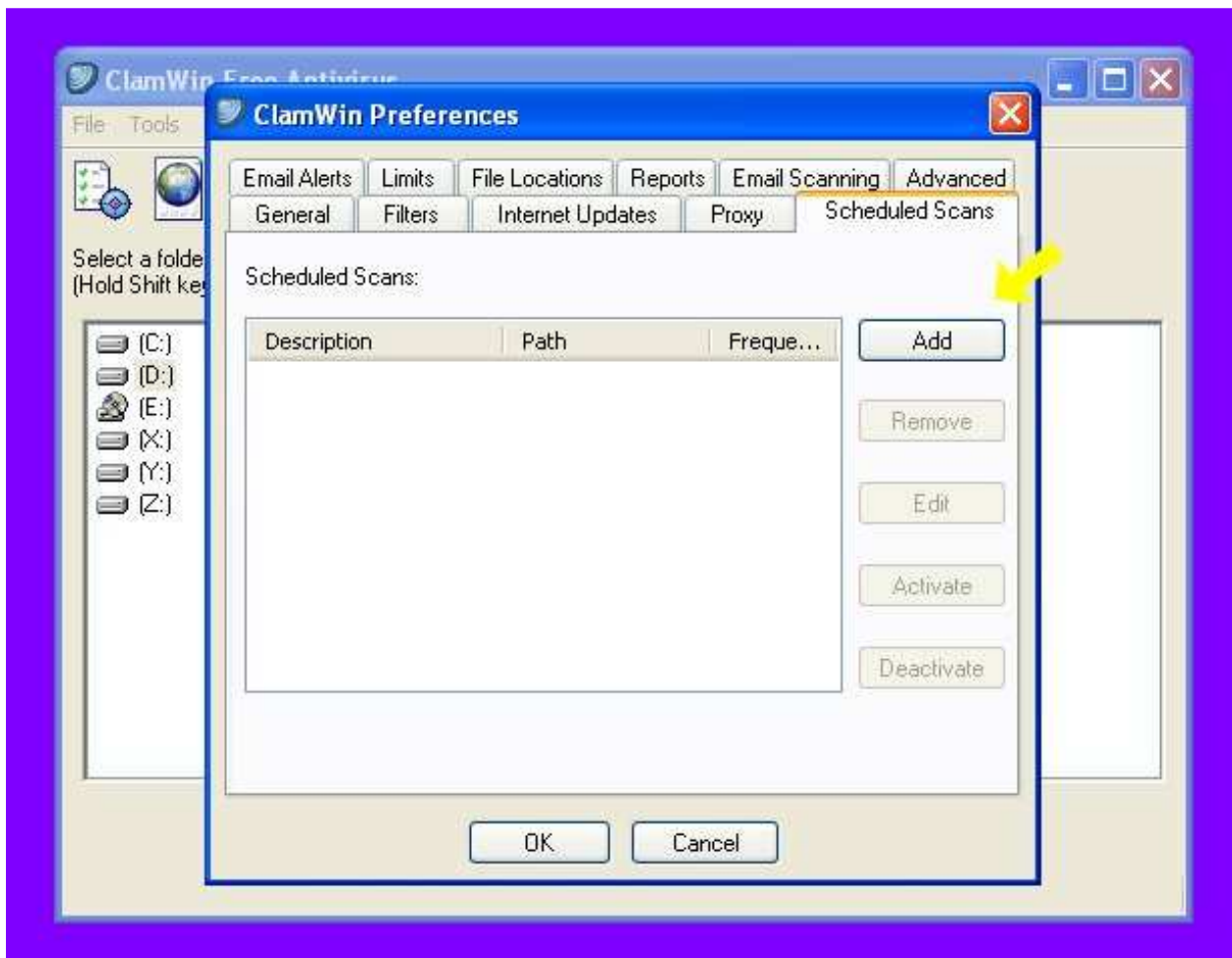
There are three different settings we want to configure. First, we want to make sure that viruses are handled correctly. At the first screen that appears after clicking on Preferences, make sure the following options are selected. (The yellow arrows point to the two important ones.)



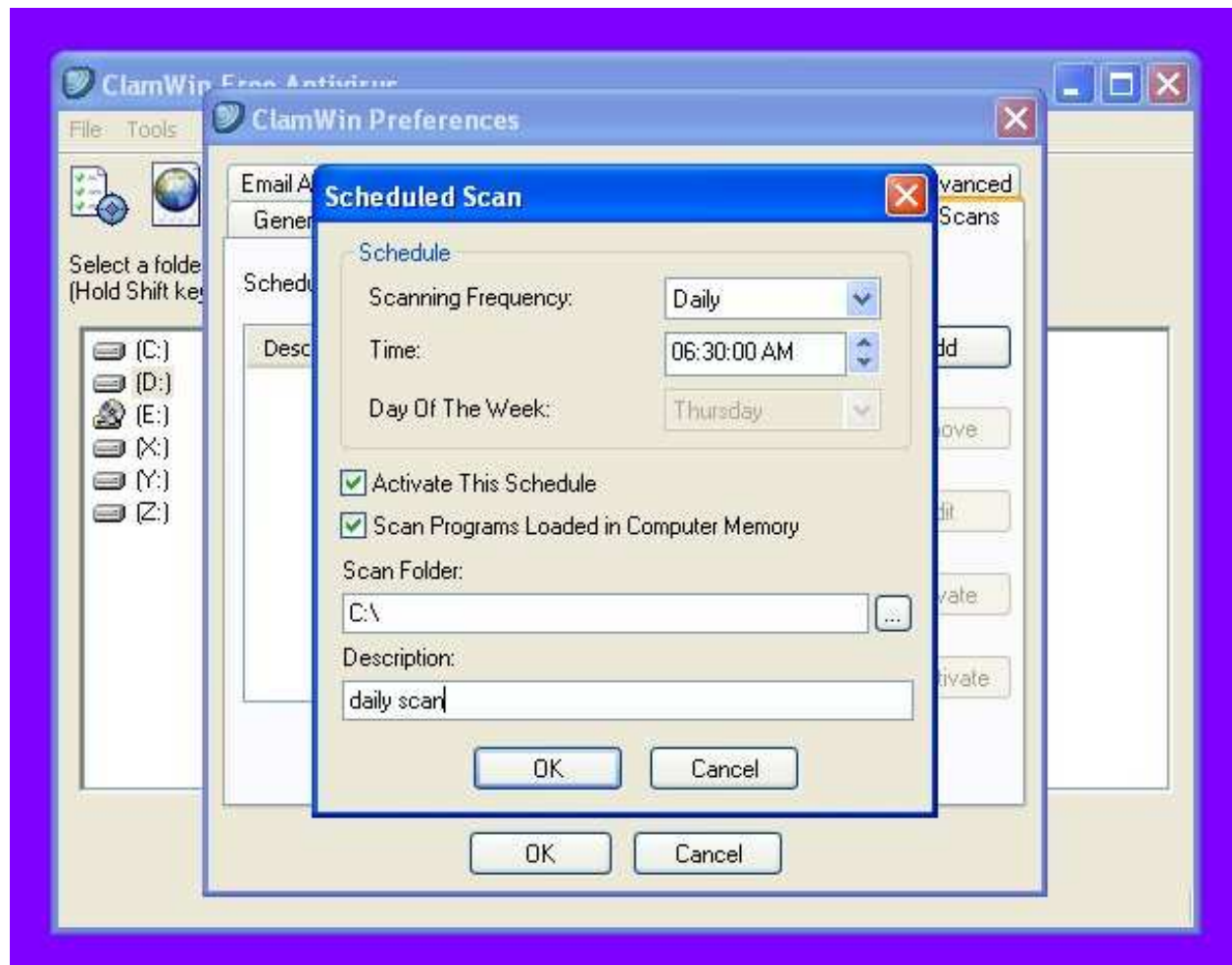
Next, we want to configure the automatic update of our virus scan files. Click on the Internet Updates tabs, and make sure the following option is selected.



And finally, we want to schedule a daily scan.
Click on the Scheduled Scans tab, and then click
on the Add button.

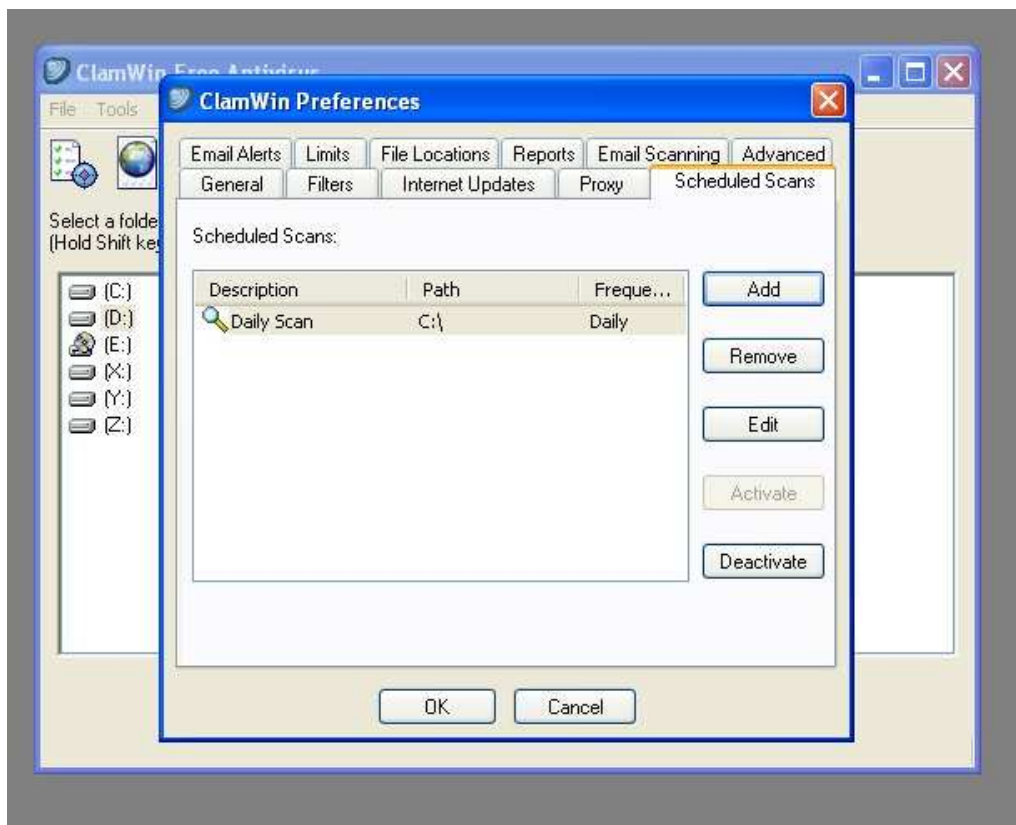


Fill in the daily scan details as follows:



Make sure everything looks like above, except for the time. You want to pick a time when the computer is usually going to be on. Like about 9-ish each morning, or something.

When you've entered the required information, click on the OK button for the Scheduled Scan window. You should now see the new scan job listed as follows:



Now click on OK, and then on Close, and you are all ready to go.